

Installation manual

Washer extractor

WH6–20LAC, WH6–27LAC, WH6–33LAC
Clarus Vibe

Type W3....



Electrolux
PROFESSIONAL

WARNING: ALL OPERATING AND MAINTENANCE PROCEDURES SHOWN ON THE NEXT PAGE OF THIS MANUAL MUST BE FOLLOWED DAILY FOR PROPER OPERATION OF YOUR MACHINE.

MAKE CERTAIN TO KEEP THIS MANUAL IN A SECURE PLACE FOR FUTURE REFERENCE.

PLEASE ENTER THE FOLLOWING INFORMATION AS IT APPEARS ON THE MACHINE(S) DATA PLATE(S).

| | |
|---|--|
| MACHINE TYPE OR MODEL | |
| MACHINE SERIAL NUMBER(S) | |
| ELECTRICAL CHARACTERISTICS: _____ VOLTS, _____ PHASE, _____ HZ. | |

IMPORTANT SAFETY INSTRUCTIONS

WARNING -

To reduce the risk of fire, electric shock, or injury to persons when using your appliance, including the following:

1. Read all instructions before using the appliance.
2. This machine must be securely bolted to an uncovered concrete floor.
3. This machine **MUST** be serviced and operated in compliance with manufacturers instructions.
CHECK DOOR LOCKS EVERY DAY FOR PROPER OPERATION TO PREVENT INJURY OR DAMAGE. IF THE DOOR LOCK FAILS TO OPERATE PROPERLY, PLACE THE MACHINE OUT OF ORDER UNTIL THE PROBLEM IS CORRECTED.
4. Do not wash articles that have been previously cleaned in, washed in, soaked in, or spotted with gasoline, drycleaning solvents, or other flammable or explosive substances, as they give off vapors that could ignite or explode.
5. Do not add gasoline, dry-cleaning solvents, or other flammable or explosive substances to the wash water. These substances give off vapours that could ignite or explode.
6. Under certain conditions, hydrogen gas may be produced in a hot-water system that has not been used for weeks or more. **HYDROGEN GAS IS EXPLOSIVE.** If the hot-water system has not been used for such a period, before using a washing machine, turn on all hot-water faucets and let the water flow from each for several minutes. This will release any accumulated hydrogen gas. As the gas is flammable, do not smoke or use an open flame during this time.
7. Do not allow children to play on or in the appliance. Close supervision of children is necessary when the appliance is used near children.
8. Before the appliance is removed from service or discarded, remove the door.
9. Do not reach into the appliance if the tub is moving.
10. Do not install or store this appliance where it will be exposed to the weather.
11. Do not tamper with controls.
12. Do not repair or replace any part of the appliance or attempt any servicing unless specifically recommended in the user-maintenance instructions or in published user-repair instructions that you understand and have the skills to carry out.
13. Changing of fuses inside the washing machine may only be carried out by authorized personnel.
14. This machine **MUST** be connected to a dedicated electrical circuit to which no other lighting unit or general purpose receptacle is connected. Use copper conductor only.

NOTICE TO: OWNERS, OPERATORS AND DEALERS

IMPROPER INSTALLATION AND INADEQUATE MAINTENANCE, POOR HOUSEKEEPING AND WILLFUL NEGLIGENCE OR BYPASSING OF SAFETY DEVICES MAY RESULT IN SERIOUS ACCIDENTS OR INJURY. TO ASSURE THE SAFETY OF CUSTOMERS AND/OR OPERATORS OF YOUR MACHINE, THE FOLLOWING MAINTENANCE CHECKS MUST BE PERFORMED ON A DAILY BASIS.

1. **Prior to operation of the machine**, check to make certain that all operating instructions and warning signs are affixed to the machine and legible. Missing or illegible ones must be replaced immediately. Be sure you have spare signs and labels available at all times. These can be obtained from your dealer.
2. **Check the door safety interlock, as follows:**
 - a. OPEN THE DOOR of the machine and attempt to start in the normal manner:
For coin-operated models, insert the proper coins to start the machine.
For manually operated models, place the ON-OFF switch in the ON position and press the Start switch.

THE MACHINE(S) MUST NOT START !

- b. CLOSE THE DOOR to start machine operation and, while it is operating, attempt to open the door without exerting extreme force on the door handle. The door should remain locked!
If the machine can start with the door open, or can continue to operate with the door unlocked, the door interlock is no longer operating properly. The machine **must** be placed **out of order** and the interlock immediately replaced.
3. DO NOT UNDER ANY CIRCUMSTANCES ATTEMPT TO BYPASS OR REWIRE ANY OF THE MACHINE SAFETY DEVICES AS THIS CAN RESULT IN SERIOUS ACCIDENTS.
4. **Be sure to keep the machine(s) in proper working order:** Follow **all** maintenance and safety procedures. Further information regarding machine safety, service and parts can be obtained from your dealer.
All requests for assistance must include the model, serial number and electrical characteristics as they appear on the machine identification plate. Insert this information in the space provided on the previous page of this manual.
5. **WARNING:** DO NOT OPERATE MACHINE(S) WITH SAFETY DEVICES BYPASSED, REWIRED OR INOPERATIVE! DO NOT OPEN MACHINE DOOR UNTIL DRUM HAS STOPPED ROTATING!

NOTICE TO INSTALLER

Improper installation of this machine:

- May cause serious damage to the machine.
- May result in other property damage.
- May cause personal injury.
- Will void the manufacturer's warranty.

Improper fastening of this machine to its foundation, inferior foundation materials, an undersized foundation, the use of fabricated steel bases not provided by Electrolux Professional or its approved supplier(s), the use of an improper type, number, or size of mounting bolts, or failure to use proper hardware on mounting bolts may result in damage to the machine that will not be covered by the manufacturer's warranty.

Connection to line Voltage or over-current protection devices other than those specified on the data plate may result in severe damage to machine components, and will void the manufacturer's warranty.

Refer to complete installation instructions provided in manuals accompanying the machine.

Contact Electrolux Professional Technical Support with any questions BEFORE installing this machine. Damage resulting from inadequate installation materials or improper installation techniques will void the manufacturer's warranty.

Contents

Contents

| | | |
|--------|---|----|
| 1 | Safety Precautions | 9 |
| 1.1 | General safety information..... | 9 |
| 1.2 | Commercial use only..... | 9 |
| 1.3 | Copyright | 9 |
| 1.4 | Symbols..... | 10 |
| 2 | Warranty terms and exclusions..... | 11 |
| 3 | Technical data..... | 12 |
| 3.1 | WH6–20LAC, WH6–27LAC, WH6–33LAC..... | 12 |
| 3.2 | Technical data | 13 |
| 3.3 | Connections | 13 |
| 4 | Setup | 14 |
| 4.1 | Unpacking..... | 14 |
| 4.2 | Recycling instruction for packaging | 16 |
| 4.3 | Siting | 17 |
| 4.4 | Mechanical installation | 17 |
| 5 | Water connection | 19 |
| 6 | Water hardness and dosage..... | 20 |
| 6.1 | WH6–20LAC | 20 |
| 6.2 | WH6–27LAC | 21 |
| 6.3 | WH6–33LAC | 22 |
| 7 | Connection of external dosing systems | 23 |
| 7.1 | Jetsave and Dosave..... | 23 |
| 7.1.1 | Connection of the tube..... | 23 |
| 8 | Drain connection | 24 |
| 9 | Electrical connection..... | 25 |
| 9.1 | Electrical installation | 25 |
| 9.2 | Electrical connections | 26 |
| 9.3 | Machine connection with ferrite..... | 27 |
| 9.3.1 | WH6–20LAC, WH6–27LAC, WH6–33LAC | 27 |
| 9.4 | Machine connection | 28 |
| 9.5 | Connector with termination resistor | 29 |
| 10 | Steam connection | 30 |
| 11 | At first power up | 31 |
| 12 | Function check..... | 32 |
| 13 | Disposal information | 33 |
| 13.1 | Appliance recyclability and disposal | 33 |
| 13.1.1 | Recyclability..... | 33 |
| 13.1.2 | Procedure regarding appliance disposal and component / material recovery..... | 33 |
| 13.2 | Disposal of packing..... | 33 |

The manufacturer reserves the right to make changes to design and component specifications.

1 Safety Precautions

- Servicing shall be carried out only by authorized personnel.
- Only authorized spare parts, accessories and consumables shall be used.
- Only use detergent intended for water-wash of textiles. Never use dry cleaning agents.
- The machine shall be connected with new water hoses. Re-used water hoses must not be used.
- The machine's door lock must under no circumstances be bypassed.
- If the machine develops a fault, this must be reported to the person in charge as soon as possible. This is important both for your safety and that of others.
- DO NOT MODIFY THIS APPLIANCE.
- When performing service or replacing parts, the power must be disconnected.
- When the power is disconnected, the operator must see that the machine is disconnected (that the plug is removed and remains removed) from any point to which he has access. If this is not possible, due to the construction or installation of the machine, a disconnection with a locking system in the isolated position shall be provided.
- In accordance with the wiring rules: mount a multi-pole switch prior to the machine to facilitate installation and service operations.
- If different rated voltages or different rated frequencies (separated by a /) are stated at the machine data plate, instructions for adjusting the appliance for operation at the required rated voltage or rated frequency are stated in the installation manual.
- Stationary appliances not fitted with means for disconnection from the supply mains having a contact separation in all poles that provide full disconnection under overvoltage category III, means for disconnection must be incorporated in the fixed wiring in accordance with the wiring rules.
- The openings in the base, shall not be obstructed by a carpet.
- Maximum mass of dry cloth: WH6–20LAC: 21 kg / 46.3 lbs, WH6–27LAC: 27.5 kg / 60.6 lbs, WH6–33LAC: 36.5 kg / 80.5 lbs.
- A-weighted emission sound pressure level at working stations:
 - Wash: WH6–20LAC: <70 dB(A), WH6–27LAC: <70 dB(A), WH6–33LAC: <70 dB(A).
 - Extraction: WH6–20LAC: <70 dB(A), WH6–27LAC: <70 dB(A), WH6–33LAC: <70 dB(A).
- Maximum inlet water pressure: 1000 kPa / 145 psi
- Minimum inlet water pressure: 50 kPa / 8 psi

1.1 General safety information

The machine is only intended for water-wash use.

Do not hose down the machine with water.

In order to prevent damage to the electronics (and other parts) that may occur as the result of condensation, the machine should be placed in room temperature for 24 hours before being used for the first time.




1.2 Commercial use only

The machine/machines covered by this manual is/are made for commercial and industrial use only.

1.3 Copyright

This manual is intended solely for consultation by the operator and can only be given to third parties with the permission of Electrolux Professional AB company.

1.4 Symbols

| | |
|---|--|
|  | Caution |
|  | Caution, high voltage |
|  | Read the instructions before using the machine |

2 Warranty terms and exclusions

If the purchase of this product includes warranty coverage, warranty is provided in line with local regulations and subject to the product being installed and used for the purposes as designed, and as described within the appropriate equipment documentation.

Warranty will be applicable where the customer has used only genuine spare parts and has performed maintenance in accordance with Electrolux Professional AB user and maintenance documentation made available in paper or electronic format.

Electrolux Professional AB strongly recommends using Electrolux Professional AB approved cleaning, rinse and descaling agents to obtain optimal results and maintain product efficiency over time.

The Electrolux Professional AB warranty does not cover:

- service trips cost to deliver and pick up the product;
- installation;
- training on how to use/operate;
- replacement (and/or supply) of wear and tear parts unless resulting from defects in materials or workmanship reported within one (1) week from the failure;
- correction of external wiring;
- correction of unauthorized repairs as well as any damages, failures and inefficiencies caused by and/or resulting from;
 - insufficient and/or abnormal capacity of the electrical systems (current/voltage/frequency, including spikes and/or outages);
 - inadequate or interrupted water supply, steam, air, gas (including impurities and/or other that does not comply with the technical requirements for each appliance);
 - plumbing parts, components or consumable cleaning products that are not approved by the manufacturer;
 - customer's negligence, misuse, abuse and/or non-compliance with the use and care instructions detailed within the appropriate equipment documentation;
 - improper or poor: installation, repair, maintenance (including tampering, modifications and repairs carried out by third parties not authorized third parties) and modification of safety systems;
 - Use of non-original components (e.g.: consumables, wear and tear, or spare parts);
 - environment conditions provoking thermal (e.g. overheating/freezing) or chemical (e.g. corrosion/oxidation) stress;
 - foreign objects placed in- or connected to- the product;
 - accidents or force majeure;
 - transportation and handling, including scratches, dents, chips, and/or other damage to the finish of the product, unless such damage results from defects in materials or workmanship and is reported within one (1) week of delivery unless otherwise agreed;
- product with original serial numbers that have been removed, altered or cannot be readily determined;
- replacement of light bulbs, filters or any consumable parts;
- any accessories and software not approved or specified by Electrolux Professional AB.

Warranty does not include scheduled maintenance activities (including the parts required for it) or the supply of cleaning agents unless specifically covered within any local agreement, subject to local terms and conditions.

Check on Electrolux Professional AB website the list of authorized customer care.

3 Technical data

3.1 WH6-20LAC, WH6-27LAC, WH6-33LAC

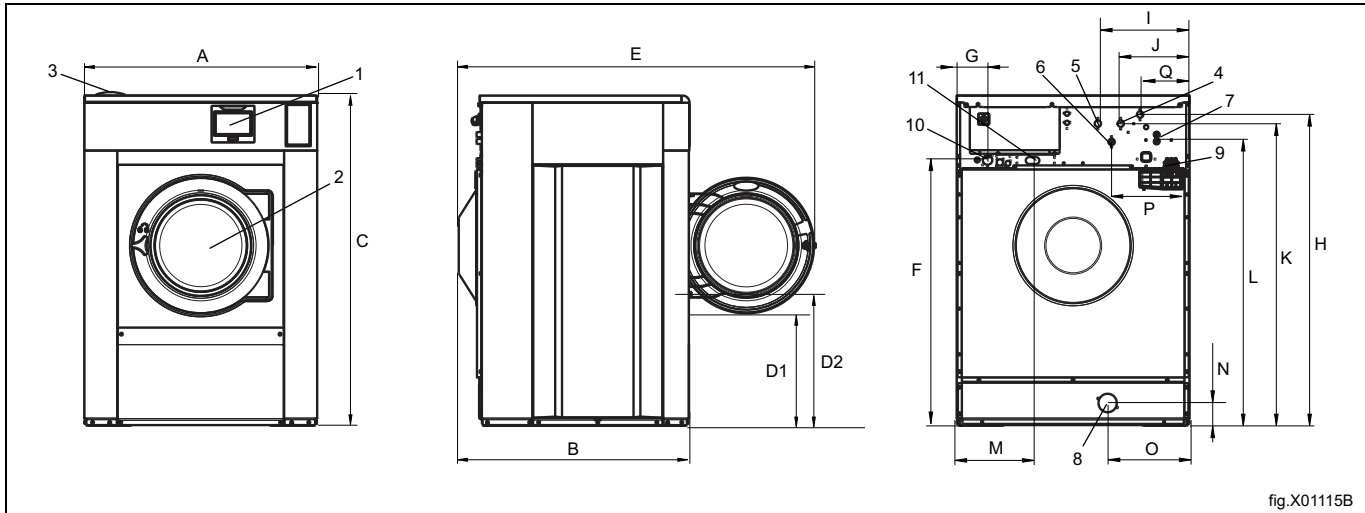


fig.X01115B

| | |
|----|---|
| 1 | Display |
| 2 | Door opening, WH6-20LAC, WH6-27LAC, WH6-33LAC: \varnothing 435 mm / 17 1/8 inch |
| 3 | Detergent container |
| 4 | Cold water |
| 5 | Hot water |
| 6 | Cold/Hot water |
| 7 | Re-used water |
| 8 | Drain valve |
| 9 | Liquid detergent supply |
| 10 | Electrical connection |
| 11 | Steam connection |

| mm inch | A | B | C | D1 | D2 | E | F | G |
|------------|-----------------|------------------|------------------|-----------------|-----------------|-----------------|------------------|---------------|
| WH6-20LAC | 970 38 3/16 | 945 37 3/16 | 1415 55 11/16 | 470 18 1/2 | 555 21 7/8 | 1480 58 1/4 | 1135 44 11/16 | 150 5 7/8 |
| WH6-27LAC | 1020 40 3/16 | 990 39 | 1450 57 1/16 | 500 19 11/16 | 580 22 13/16 | 1525 60 1/16 | 1170 46 1/16 | 135 5 5/16 |
| WH6-33LAC | 1020 40 3/16 | 1135 44 11/16 | 1450 57 1/16 | 500 19 11/16 | 580 22 13/16 | 1665 65 9/16 | 1170 46 1/16 | 135 5 5/16 |

| mm inch | H | I | J | K | L | M | N | O |
|------------|----------------|---------------|-----------------|------------------|----------------|----------------|--------------|----------------|
| WH6-20LAC | 1330 52 3/8 | 400 15 3/4 | 300 11 13/16 | 1290 50 13/16 | 1210 47 5/8 | 350 13 3/4 | 105 4 1/8 | 335 13 3/16 |
| WH6-27LAC | 1365 53 3/4 | 400 15 3/4 | 300 11 13/16 | 1325 52 3/16 | 1245 49 | 335 13 3/16 | 105 4 1/8 | 360 14 3/16 |
| WH6-33LAC | 1365 53 3/4 | 400 15 3/4 | 300 11 13/16 | 1325 52 3/16 | 1245 49 | 335 13 3/16 | 105 4 1/8 | 360 14 3/16 |

| mm inch | P | Q |
|------------|---------------|---------------|
| WH6-20LAC | 330 13 | 215 8 7/16 |
| WH6-27LAC | 340 13 3/8 | 215 8 7/16 |
| WH6-33LAC | 340 13 3/8 | 215 8 7/16 |

3.2 Technical data

| | | WH6-20LAC | WH6-27LAC | WH6-33LAC |
|---|-----------------|-----------|------------|------------|
| Weight, net | kg | 354 | 425 | 560 |
| | lbs | 780 | 937 | 1235 |
| Drum volume | litres | 180 | 240 | 300 |
| | ft ³ | 6.4 | 8.5 | 10.6 |
| Drum diameter | mm | 725 | 795 | 795 |
| | inch | 28 9/16 | 31 5/16 | 31 5/16 |
| Drum speed during wash | rpm | 42 | 40 | 40 |
| Drum speed during extraction | rpm | 1055 | 1007 | 1007 |
| G-factor, max. | | 450 | 450 | 450 |
| Heating: Electricity | kW | 18 | 23 | 23 |
| Heating: Steam | | x | x | x |
| Heating: Hot water | | x | x | x |
| Frequency of the dynamic force | Hz | 17.6 | 16.8 | 15.8 |
| Floor load at max extraction | kN | 4.2 ± 1.0 | 5.2 ± 1.0 | 6.2 ± 1.3 |
| | lbs force | 944 ± 221 | 1158 ± 221 | 1387 ± 292 |
| Sound power/pressure level at extraction* | dB(A) | 84/68 | 83/68 | 82/66 |
| Sound power/pressure level at wash* | dB(A) | 66/50 | 64/48 | 66/50 |
| Heat emission of installed power, max | % | 5 | 5 | 5 |

* Sound power levels measured according to ISO 60704.

3.3 Connections

| | | WH6-20LAC | WH6-27LAC | WH6-33LAC |
|------------------------------------|------------|-----------|-----------|-----------|
| Water valves | DN | 20 | 20 | 20 |
| | BSP | 3/4" | 3/4" | 3/4" |
| Recommended water pressure | kPa | 200-600 | 200-600 | 200-600 |
| | psi | 30-90 | 30-90 | 30-90 |
| Continuous operating pressure | kPa | 50-800 | 50-800 | 50-800 |
| | psi | 8-116 | 8-116 | 8-116 |
| Capacity at 300 kPa / 44 psi | l/min | 30 | 60 | 60 |
| | gallon/min | 8 | 15 | 15 |
| Drain valve ø outer | mm | 75 | 75 | 75 |
| | inch | 3 | 3 | 3 |
| Draining capacity | l/min | 170 | 170 | 170 |
| | gallon/min | 45 | 45 | 45 |
| Steam valve connection | DN | 15 | 15 | 15 |
| | BSP | 1/2" | 1/2" | 1/2" |
| Recommended steam pressure | kPa | 300-600 | 300-600 | 300-600 |
| | psi | 44-87 | 44-87 | 44-87 |
| Functioning limits for steam valve | kPa | 50-800 | 50-800 | 50-800 |
| | psi | 8-115 | 8-115 | 8-115 |

4 Setup

4.1 Unpacking

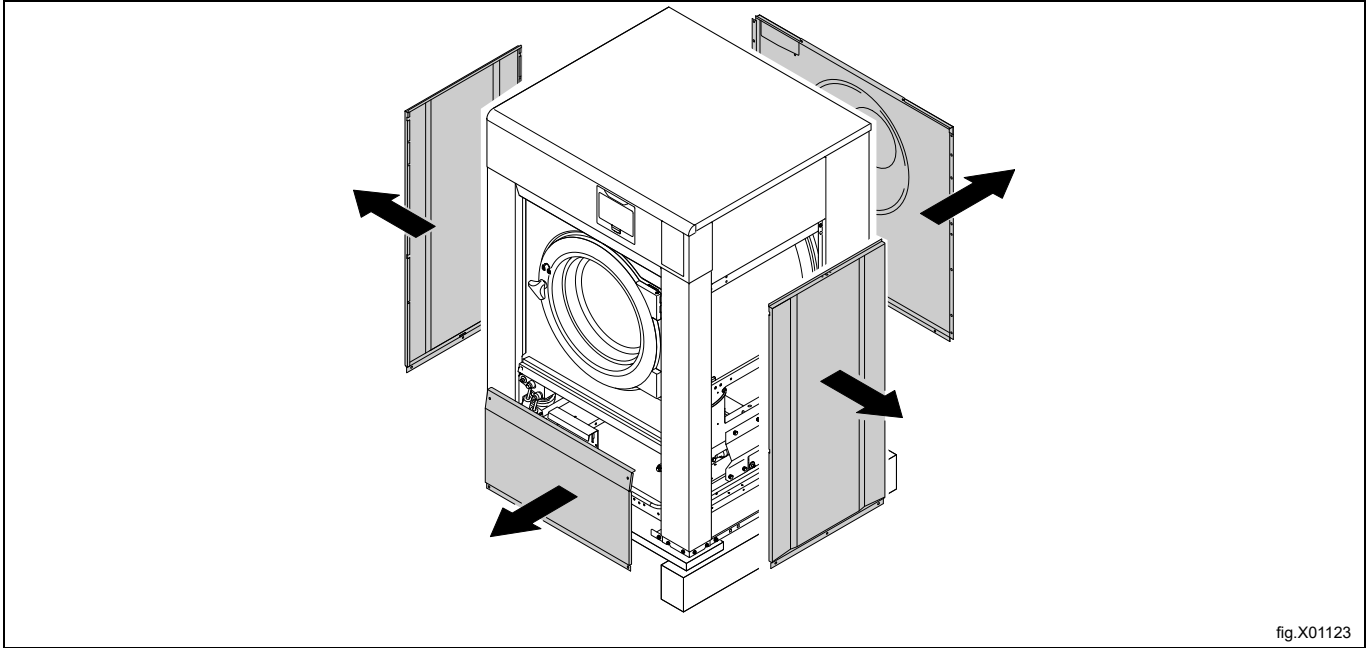
Removal of the bolts between the machine and pallet

Note!

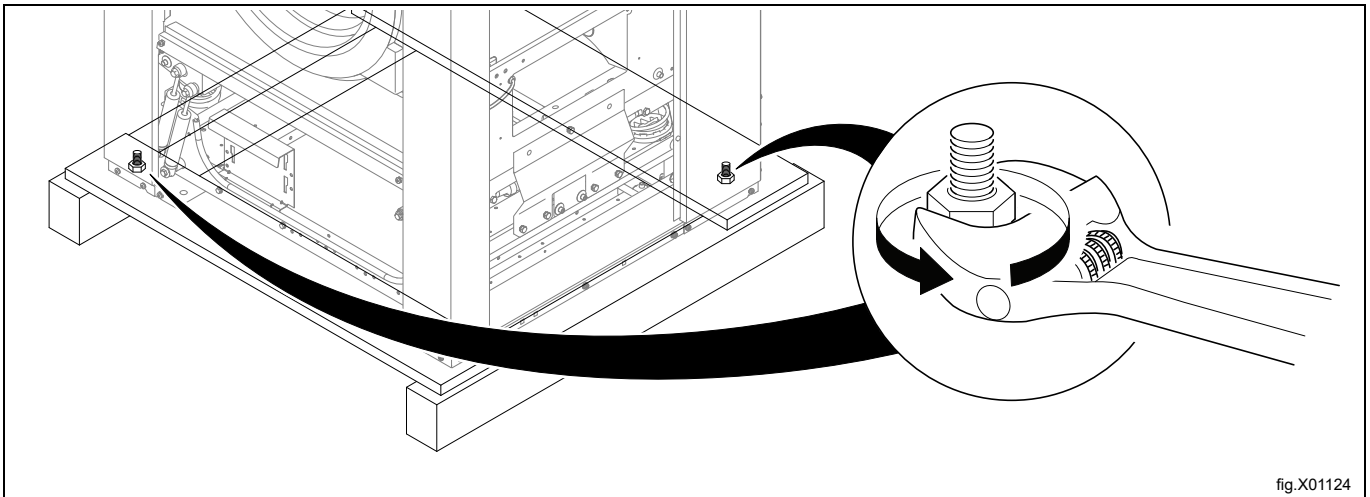
Two persons are recommended for the unpacking.

Remove the side panels.

Remove the front and rear panel.



Remove the bolts between the machine and pallet.



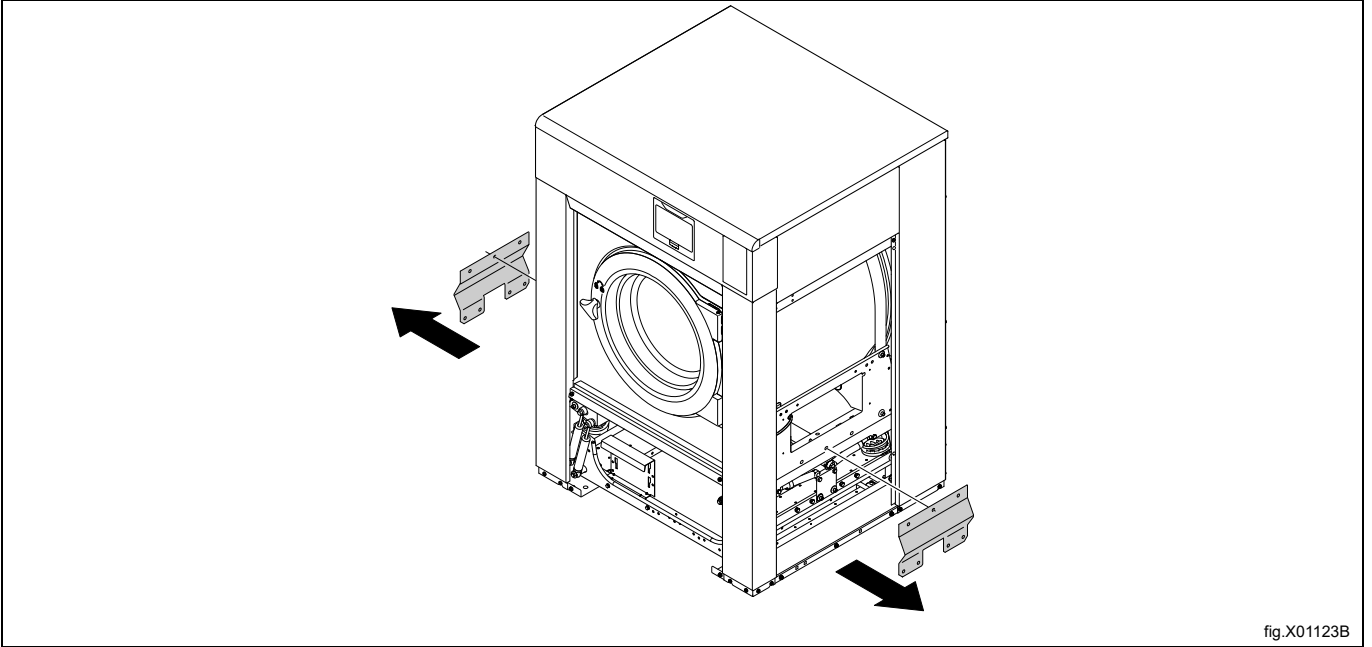
Remove the machine from the pallet.

Removal of the transport securities

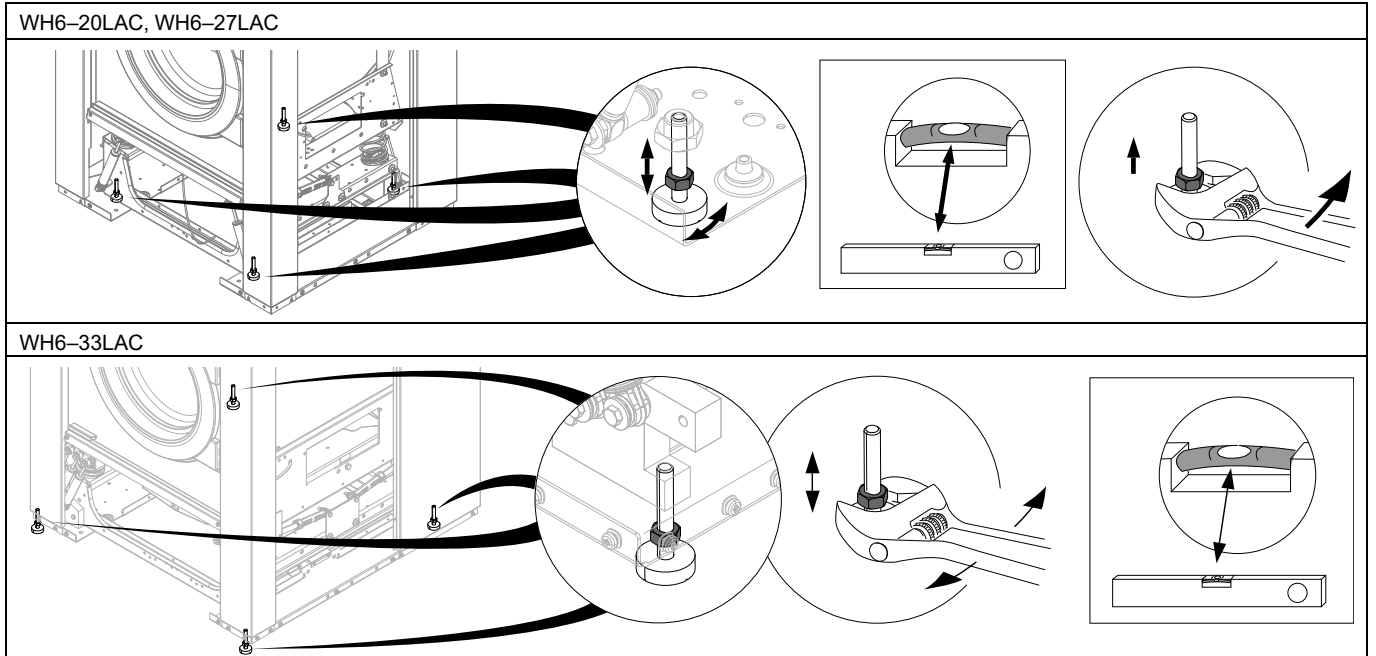
When the machine is placed in final or close to final position, remove the four transport supports. Save the transport supports if the machine needs to be moved in the future.

Note!

Once the transport supports have been removed, handle the machine carefully to avoid damage to the suspension components.



When the machine is placed in final position, mount the supporting feet. (If the machine is not to be mounted on a base).



4.2 Recycling instruction for packaging

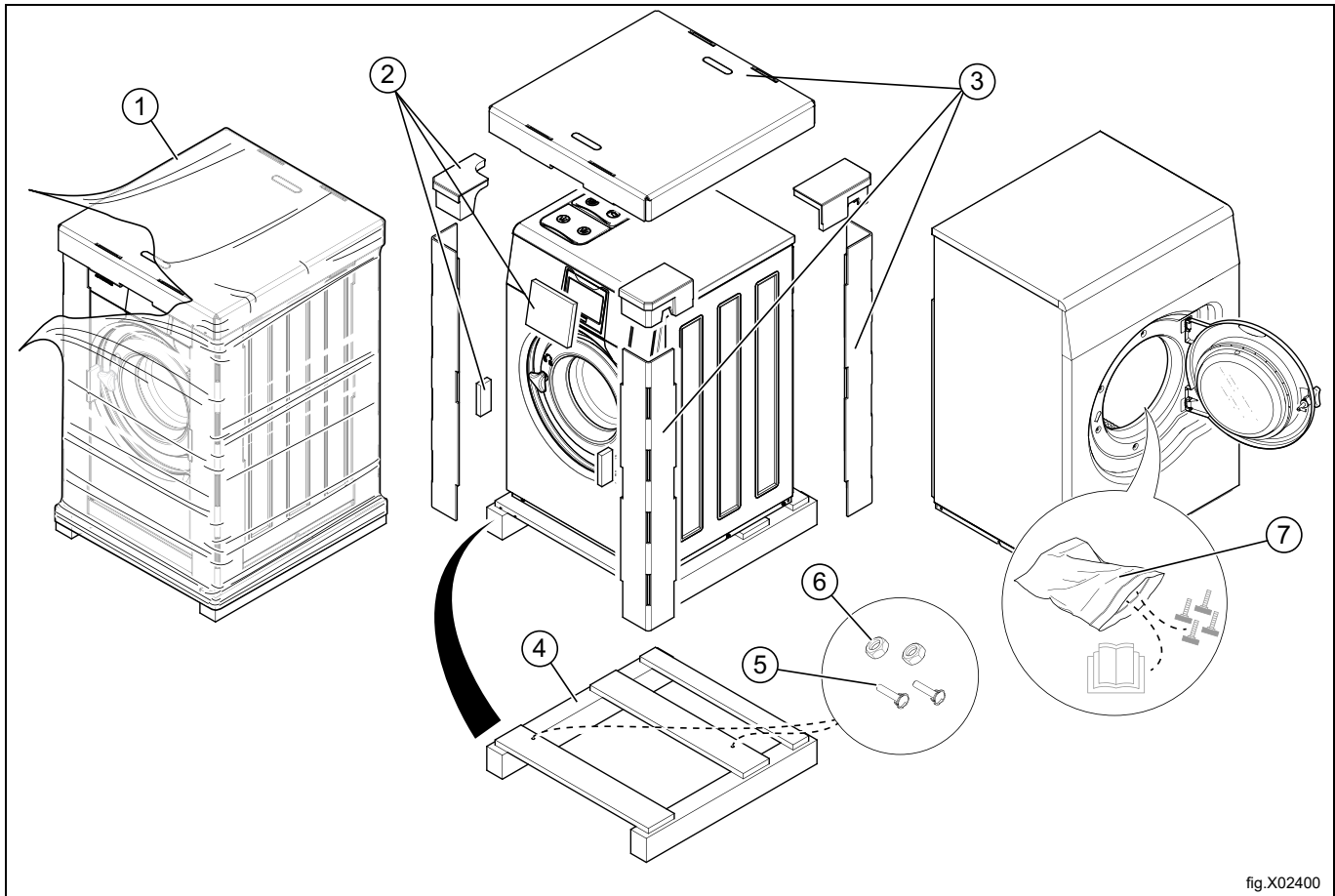


fig.X02400

| Fig. | Description | Code | Type |
|------|---------------------|--------|----------|
| 1 | Wrapping film | LDPE 4 | Plastics |
| 2 | Corner protection | PS 6 | Plastics |
| 3 | Cardboard packaging | PAP 20 | Paper |
| 4 | Pallet | FOR 50 | Wood |
| 5 | Screw | FE 40 | Steel |
| 6 | Nut | FE 40 | Steel |
| 7 | Plastic bag | PET 1 | Plastics |

4.3 Siting

Install the machine close to a floor drain or open drain.

The machine should be positioned so that there is plenty of room for working, both for the user and service personnel. The figure shows minimum distance to a wall and/or other machines. Failure to respect the prescribed distances will prevent easy access for maintenance and service operations.

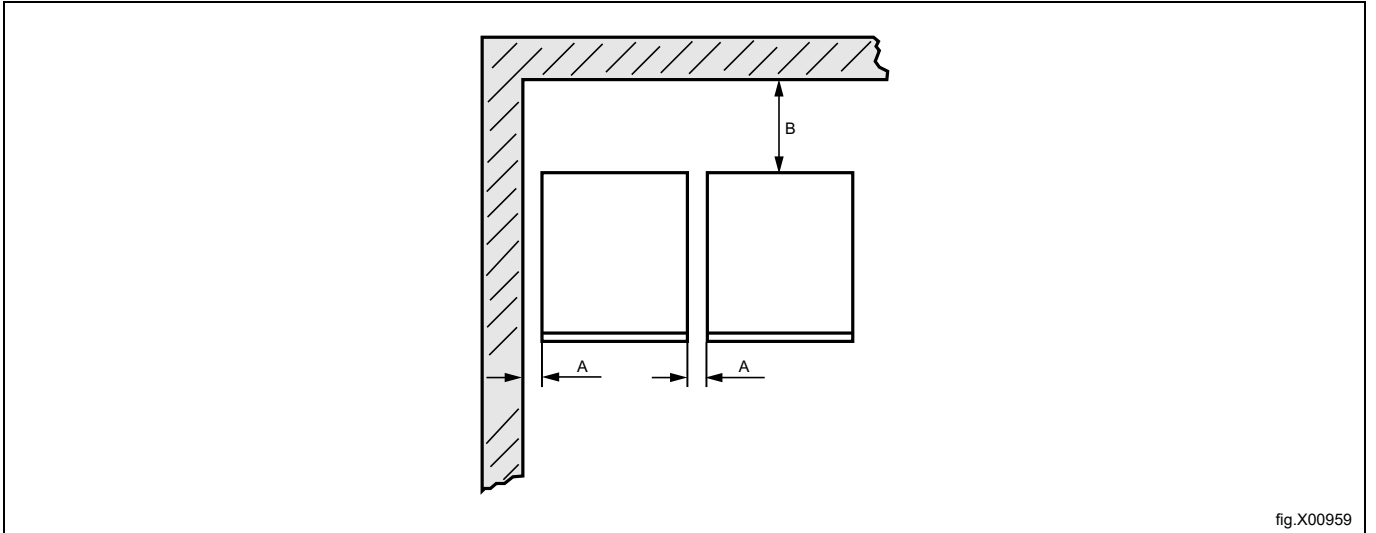


fig.X00959

| | |
|---|------------------|
| A | 25 mm / 1 inch |
| B | 500 mm / 20 inch |

4.4 Mechanical installation

If the machine is not to be mounted on a base the machine must be fastened to the floor with the enclosed expansion bolts.

The table shows the correct position of feet and drilling points.

Mark and drill two holes (\varnothing 10 mm / 3/8 inch) about 50 mm / 1 15/16 inch deep in position (1).

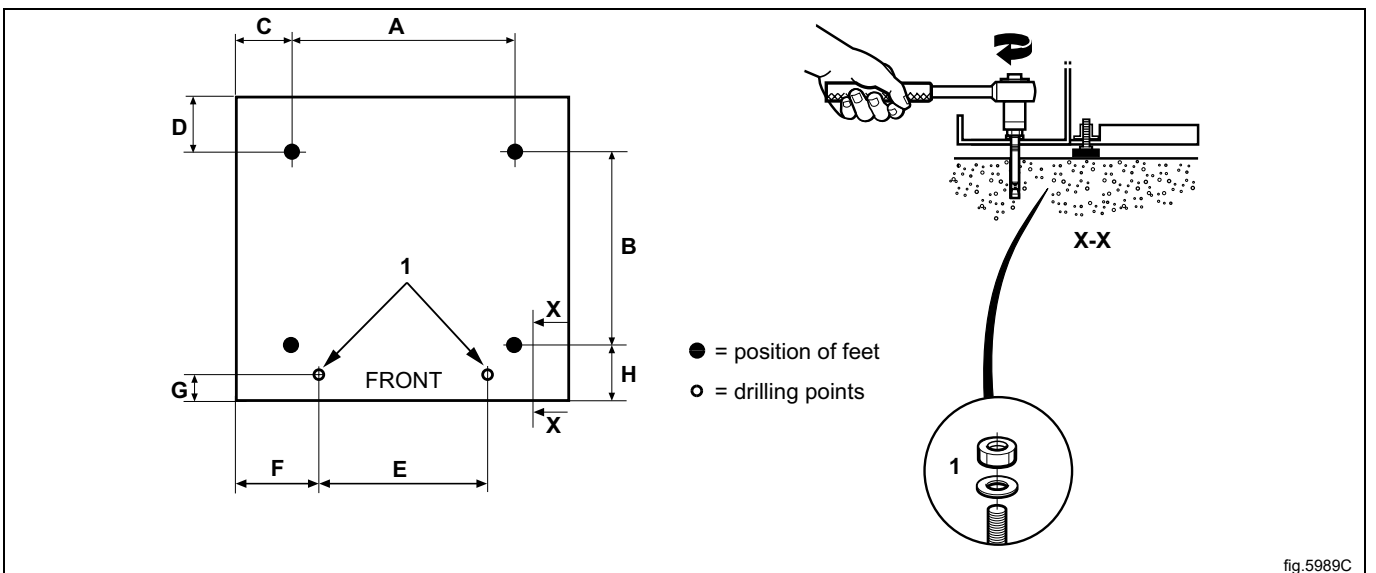


fig.5989C

| mm inch | A | B | C | D | E | F | G | H |
|------------|----------------|----------------|----------------|---------------|----------------|---------------|--------------|----------------|
| WH6-20LAC | 715 28 1/8 | 545 21 7/16 | 125 4 15/16 | 205 8 1/16 | 595 23 7/16 | 185 7 5/16 | 65 2 9/16 | 125 4 15/16 |
| WH6-27LAC | 790 31 1/8 | 615 24 3/16 | 115 4 1/2 | 180 7 1/16 | 670 26 3/8 | 175 6 7/8 | 65 2 9/16 | 125 4 15/16 |
| WH6-33LAC | 900 35 7/16 | 835 32 7/8 | 60 2 3/8 | 140 5 1/2 | 670 26 3/8 | 175 6 7/8 | 60 2 3/8 | 80 3 1/8 |

Place the machine over the two drilled holes. The holes are at the front of the machine.

Level the machine with the feet of the machine. Screw in the feet as much as possible before starting to level the machine. This will make the machine stand steadier.

The maximum height adjustment of the feet is 50 mm / 1 15/16 inch.

Insert the expansion bolts (1) into the holes drilled in the floor. Fit the washers and nuts and tighten with tightening torque 5 Nm / 3.7 lbf.ft.



It is of the utmost importance that the machine is placed in level, from side to side as well as front to rear.
Remount the panels when ready.

5 Water connection

All water intake connections to the machine should be fitted with manual shut-off valves and filters, to facilitate installation and servicing.

Water pipes and hoses should be flushed clean before installation.

The machine shall be connected with new water hoses. Re-used water hoses must not be used.

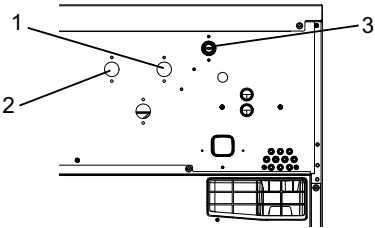
Hoses are to be of an approved type and grade and comply with national regulations.

After installation hoses must hang in gentle arcs.

All connectors present on the machine must be connected to the water supply or the machine may not function properly. The table shows the possible connection options, which will depend on the water types to be connected to the machine. Information is also available on the panel above the connections.

Note!

The water supply should be within the recommended hardness range of 3 grains or less per gallon. Higher hardness may cause excessive formation of limescale. Chlorides must not exceed 30 ppm. The buildup of limescale will negatively affect operation, performance and warranty approval.

| | Water type | Water connection |
|---|--|--|
|  | <ul style="list-style-type: none"> • Cold and hot | <ol style="list-style-type: none"> 1. Cold 2. Hot 3. Cold (for detergent dispenser) / Hot |

Note!

For unheated machines with Lagoon Advanced Care programs, the programs requires pre heating (25°C) for the cold water valves.

Note!

The inlet temperature for cold water must not be higher than 25°C. If so, a water cooling system must be installed.

Water pressure:

Continuous operating pressure: 50–800 kPa / 8–116 psi (0.5-80 kp/cm²)

Maximum: 1000 kPa / 145 psi (10 kp/cm²)

Recommended: 200–600 kPa / 30–90 psi (2–6 kp/cm²)

Recommended water hardness: 3 grains per gallon

Recommended pH-range: 7.0–8.0

Acceptable range for chloride concentration: 0–30 ppm

Note!

If the water pressure is below the minimum value, the wash result can not be guaranteed for certain program.

6 Water hardness and dosage

Check the water hardness at your location and adjust the dosage according to the tables. The tables shows different dosage for different programs.

A water hardness kit is available at Part No. 0S0586.

6.1 WH6–20LAC

WH6–20LAC with full lagoon load (14 kg / 30.9 lbs)

| Water hardness range | | | ppm | Water softener | W01 - Lagoon Sensitive Detergent | |
|----------------------|-------|-------|---------|--------------------|---|---------------------|
| °D | °F | °E | | | Program Wool High/Medium With weighing | |
| | | | | | Dosage ml/kg | Dosage ml/full load |
| 0–5 | 0–9 | 0–6 | 0–90 | Not required | 8.3 | 117 |
| 5–10 | 9–18 | 6–12 | 90–180 | Preferable | 9.6 | 134 |
| 10–15 | 18–27 | 12–19 | 180–270 | Recommended | 11.7 | 163 |
| > 15 | > 27 | > 19 | > 270 | Highly recommended | 12.5 | 175 |

| Water hardness range | | | ppm | Water softener | W02 - Lagoon Delicate Detergent | | | |
|----------------------|-------|-------|---------|--------------------|---|---------------------|------------------------------------|---------------------|
| °D | °F | °E | | | Program Synthetics- Mix Medium/Low, Curtains With weighing | | Program Gentle 40 With weighing | |
| | | | | | Dosage ml/kg | Dosage ml/full load | Dosage ml/kg | Dosage ml/full load |
| 0–5 | 0–9 | 0–6 | 0–90 | Not required | 8.3 | 117 | 6.0 | 84 |
| 5–10 | 9–18 | 6–12 | 90–180 | Preferable | 9.6 | 134 | 7.0 | 98 |
| 10–15 | 18–27 | 12–19 | 180–270 | Recommended | 11.7 | 163 | 8.0 | 112 |
| > 15 | > 27 | > 19 | > 270 | Highly recommended | 12.5 | 175 | 9.0 | 126 |

| Water hardness range | | | ppm | Water softener | W03 - Lagoon Sensitive Conditioner | | | |
|----------------------|-------|-------|---------|--------------------|---|---------------------|---|---------------------|
| °D | °F | °E | | | Program Wool High/Medium With weighing | | Synthetics- Mix Medium/Low, Curtains, Gentle 40 With weighing | |
| | | | | | Dosage ml/kg | Dosage ml/full load | Dosage ml/kg | Dosage ml/full load |
| 0–5 | 0–9 | 0–6 | 0–90 | Not required | 10.0 | 140 | 3.4 | 48 |
| 5–10 | 9–18 | 6–12 | 90–180 | Preferable | 11.5 | 161 | 3.8 | 53 |
| 10–15 | 18–27 | 12–19 | 180–270 | Recommended | 14.0 | 196 | 4.4 | 62 |
| > 15 | > 27 | > 19 | > 270 | Highly recommended | 15.0 | 210 | 5.4 | 76 |

6.2 WH6–27LAC

WH6–27LAC with full lagoon load (19 kg / 41.9 lbs)

| Water hardness range | | | ppm | Water softener | W01 - Lagoon Sensitive Detergent | |
|----------------------|-------|-------|---------|--------------------|---|---------------------|
| °D | °F | °E | | | Program Wool High/Medium With weighing | |
| °D | °F | °E | | | Dosage ml/kg | Dosage ml/full load |
| 0–5 | 0–9 | 0–6 | 0–90 | Not required | 8.3 | 158 |
| 5–10 | 9–18 | 6–12 | 90–180 | Preferable | 9.6 | 182 |
| 10–15 | 18–27 | 12–19 | 180–270 | Recommended | 11.7 | 222 |
| > 15 | > 27 | > 19 | > 270 | Highly recommended | 12.5 | 238 |

| Water hardness range | | | ppm | Water softener | W02 - Lagoon Delicate Detergent | | | |
|----------------------|-------|-------|---------|--------------------|---|---------------------|------------------------------------|---------------------|
| °D | °F | °E | | | Program Synthetics- Mix Medium/Low, Curtains With weighing | | Program Gentle 40 With weighing | |
| °D | °F | °E | | | Dosage ml/kg | Dosage ml/full load | Dosage ml/kg | Dosage ml/full load |
| 0–5 | 0–9 | 0–6 | 0–90 | Not required | 8.3 | 158 | 6.0 | 114 |
| 5–10 | 9–18 | 6–12 | 90–180 | Preferable | 9.6 | 172 | 7.0 | 133 |
| 10–15 | 18–27 | 12–19 | 180–270 | Recommended | 11.7 | 222 | 8.0 | 152 |
| > 15 | > 27 | > 19 | > 270 | Highly recommended | 12.5 | 238 | 9.0 | 171 |

| Water hardness range | | | ppm | Water softener | W03 - Lagoon Sensitive Conditioner | | | |
|----------------------|-------|-------|---------|--------------------|---|---------------------|--|---------------------|
| °D | °F | °E | | | Program Wool High/Medium With weighing | | Synthetics- Mix Medium/Low, Curtains, Gentle 40 With weighing | |
| °D | °F | °E | | | Dosage ml/kg | Dosage ml/full load | Dosage ml/kg | Dosage ml/full load |
| 0–5 | 0–9 | 0–6 | 0–90 | Not required | 10.0 | 190 | 3.4 | 65 |
| 5–10 | 9–18 | 6–12 | 90–180 | Preferable | 11.5 | 219 | 3.8 | 72 |
| 10–15 | 18–27 | 12–19 | 180–270 | Recommended | 14.0 | 266 | 4.4 | 84 |
| > 15 | > 27 | > 19 | > 270 | Highly recommended | 15.0 | 285 | 5.4 | 103 |

6.3 WH6-33LAC

WH6-33LAC with full lagoon load (23 kg / 50.7 lbs)

| Water hardness range | | | ppm | Water softener | W01 - Lagoon Sensitive Detergent | |
|----------------------|-------|-------|---------|--------------------|---|---------------------|
| °D | °F | °E | | | Program Wool High/Medium With weighing | |
| | | | | | Dosage ml/kg | Dosage ml/full load |
| 0-5 | 0-9 | 0-6 | 0-90 | Not required | 8.3 | 192 |
| 5-10 | 9-18 | 6-12 | 90-180 | Preferable | 9.6 | 220 |
| 10-15 | 18-27 | 12-19 | 180-270 | Recommended | 11.7 | 268 |
| > 15 | > 27 | > 19 | > 270 | Highly recommended | 12.5 | 288 |

| Water hardness range | | | ppm | Water softener | W02 - Lagoon Delicate Detergent | | | |
|----------------------|-------|-------|---------|--------------------|---|---------------------|------------------------------------|---------------------|
| °D | °F | °E | | | Program Synthetics- Mix Medium/Low, Curtains With weighing | | Program Gentle 40 With weighing | |
| | | | | | Dosage ml/kg | Dosage ml/full load | Dosage ml/kg | Dosage ml/full load |
| 0-5 | 0-9 | 0-6 | 0-90 | Not required | 8.3 | 192 | 6.0 | 138 |
| 5-10 | 9-18 | 6-12 | 90-180 | Preferable | 9.6 | 220 | 7.0 | 161 |
| 10-15 | 18-27 | 12-19 | 180-270 | Recommended | 11.7 | 268 | 8.0 | 184 |
| > 15 | > 27 | > 19 | > 270 | Highly recommended | 12.5 | 288 | 9.0 | 207 |

| Water hardness range | | | ppm | Water softener | W03 - Lagoon Sensitive Conditioner | | | |
|----------------------|-------|-------|---------|--------------------|---|---------------------|--|---------------------|
| °D | °F | °E | | | Program Wool High/Medium With weighing | | Synthetics- Mix Medium/Low, Curtains, Gentle 40 With weighing | |
| | | | | | Dosage ml/kg | Dosage ml/full load | Dosage ml/kg | Dosage ml/full load |
| 0-5 | 0-9 | 0-6 | 0-90 | Not required | 10.0 | 230 | 3.4 | 78 |
| 5-10 | 9-18 | 6-12 | 90-180 | Preferable | 11.5 | 265 | 3.8 | 87 |
| 10-15 | 18-27 | 12-19 | 180-270 | Recommended | 14.0 | 322 | 4.4 | 101 |
| > 15 | > 27 | > 19 | > 270 | Highly recommended | 15.0 | 345 | 5.4 | 124 |

7 Connection of external dosing systems

Depending on which type of dosing system that is going to be connected, follow the instructions enclosed with the dosing system.

The following is some preparations that can be made on the machine.

7.1 Jetsave and Dosave

7.1.1 Connection of the tube

The machine is prepared for connection to the dosing systems Jetsave and Dosave.

The connections are closed at delivery. Open any of the connections that shall be used by drilling a hole where the tube shall be connected.

Note!

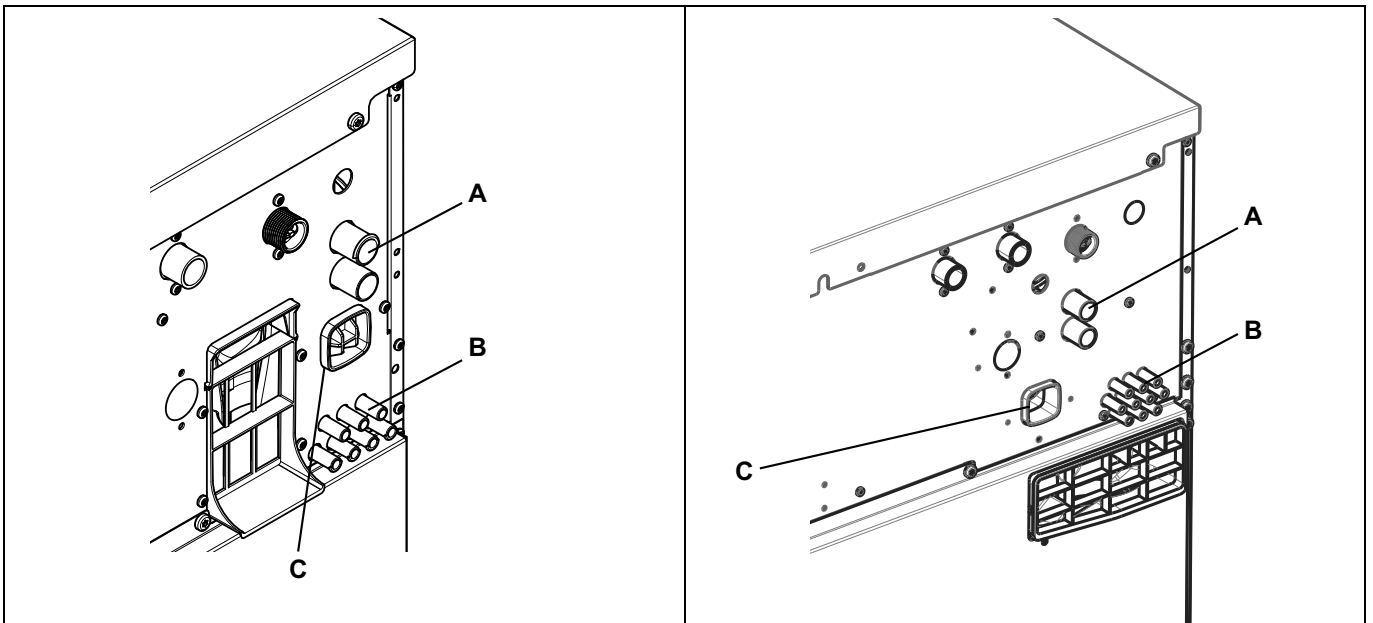
Make sure there is no burrs left after drilling. When removing burrs make sure burrs does not fall into the siphon breaker.

A = \varnothing 17 mm / 11/16 inch (used for dosing systems).

B = \varnothing 6 mm / 1/4 inch (used for external dosing systems only).

C = Only used for flush manifold. (Separate instructions enclosed when ordering).

Depending on which detergent container that is used on the machine, the rear view can be either of the examples below.



Always connect hoses on connections (A) with a hose clamp.

For connections (B); if the hoses are made of a soft material such as silicone or similar, use a cable tie to fasten the hose on the connection. If the hoses are made of a hard material, it is not recommended to make the connection tighter by using a cable tie.

Note!

Equipment for external dosing must only be connected to work on pump pressure and not on network pressure.

8 Drain connection

Connect a 75 mm / 3 inch pipe or rubber hose to the machine's drain pipe, ensuring a downward flow from the machine. Avoid sharp bends which may prevent proper draining.

The machine may drain in to a drainage through or into a closed drain system. In either case, be sure to comply with all applicable national and local plumbing code provisions.

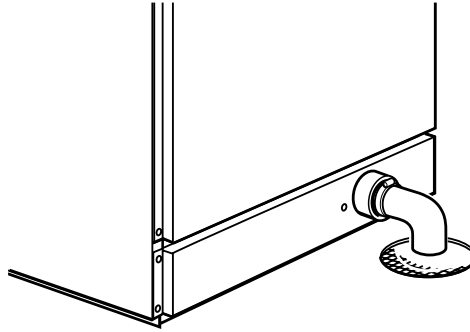


fig.5330

9 Electrical connection

9.1 Electrical installation



The electrical installation may only be carried out by qualified personnel.



Machines with frequency-controlled motors can be incompatible with certain types of earth leakage circuit breaker. It is important to know that the machines are designed to provide a high level of personal safety, which is why items of external equipment such as earth leakage circuit breakers are not necessary but is recommended. If you still want to connect your machine across an earth leakage circuit breaker, please remember the following:

- contact a skilled, authorised installation company to ensure that the appropriate type of breaker is chosen and that the dimensioning is correct
- for maximum reliability, connect only one machine per earth leakage circuit breaker
- it is important that the earth wire is properly connected.



An individual electrical disconnect must be provided in proximity to each machine.

In instances where the machine is not equipped with an omni-polar switch, one must be installed beforehand.

Mount a multi-pole switch prior to the machine to facilitate installation and service operations.

The connecting cable shall hang in a gentle curve.

When connecting to a terminal block, the connection cable shell must be stripped 10-11 mm / 3/8 — 7/16 inch. The cable area must be at least 0.5 mm² / 0.0008 inch² and no more than 4 mm² / 0.006 inch² (AWG12/AWG20). The terminal block used is a spring loaded cage clamp.

9.2 Electrical connections

WH6-20LAC

| Heating alternative | Main voltage | Hz | Heating power kW | Total power kW | Recommended fuse ITCB A |
|-------------------------|---------------|----|------------------|----------------|-------------------------|
| Electric heated | 208-240V 3 ~ | 60 | 18.0 | 18.3 | 60 |
| | 440V 3 ~ | 60 | 18.0 | 18.4 | 30 |
| | 480V 3 ~ | 60 | 18.0 | 18.4 | 30 |
| Non heated/Steam heated | 440/480V 1/3~ | 60 | * | 2.8 | 15 |
| | 208-240V 1~ | 60 | * | 2.5 | 15 |

WH6-27LAC

| Heating alternative | Main voltage | Hz | Heating power kW | Total power kW | Recommended fuse ITCB A |
|-------------------------|--------------|----|------------------|----------------|-------------------------|
| Electric heated | 208-240V 3 ~ | 60 | 19.8/23.0 | 20.5/23.7 | 70/70 |
| | 440V 3 ~ | 60 | 21.0/23.0 | 21.7/23.7 | 40/40 |
| | 480V 3 ~ | 60 | 22.8/23.0 | 23.5/23.7 | 40 |
| Non heated/Steam heated | 440/480V ~ | 60 | * | 3.0 | 15 |
| | 208-240V ~ | 60 | * | 2.7 | 15 |

WH6-33LAC

| Heating alternative | Main voltage | Hz | Heating power kW | Total power kW | Recommended fuse ITCB A |
|-------------------------|----------------|----|------------------|----------------|-------------------------|
| Electric heated | 208-240V 3 ~ | 60 | 19.8/23.0 | 20.2/23.3 | 60/70 |
| | 440V 3 ~ | 60 | 21.0/23.0 | 21.4/23.3 | 35/40 |
| | 480V 3 ~ | 60 | 22.8/23.0 | 23.2/23.4 | 35/35 |
| Non heated/Steam heated | 120V 1 ~ | 60 | * | 3.5 | 35 |
| | 208-240V 1/3 ~ | 60 | * | 3.5 | 20 |
| | 440/480V 3 ~ | 60 | * | 3.1 | 15 |

* Total power and recommended fuse does not depend on the heating power in those cases.

9.3 Machine connection with ferrite

9.3.1 WH6-20LAC, WH6-27LAC, WH6-33LAC

To obtain approved level of EMC, it is mandatory to use the ferrite which is enclosed with above listed models. (Note that this is only valid for those models).

Before connecting to the machine, the protective earth (PE) wire shall be wrapped around the ferrite.

Prepare the power cord by making sure the protective earth (PE) wire is longer than the other wires according to the table.

| Wire size | L | x times through |
|------------------------------|-----------------------|-----------------|
| AWG14 or 2.5 mm ² | 230 mm / 9 1/16 inch | x 4 |
| AWG12 or 4 mm ² | 250 mm / 9 13/16 inch | x 4 |
| AWG10 or 6 mm ² | 270 mm / 10 5/8 inch | x 4 |
| AWG8 or 10 mm ² | 290 mm / 11 7/16 inch | x 4 |
| AWG6 or 16 mm ² | 330 mm / 13 inch | x 4 |
| AWG4 or 25 mm ² | 490 mm / 19 5/16 inch | x 4 |

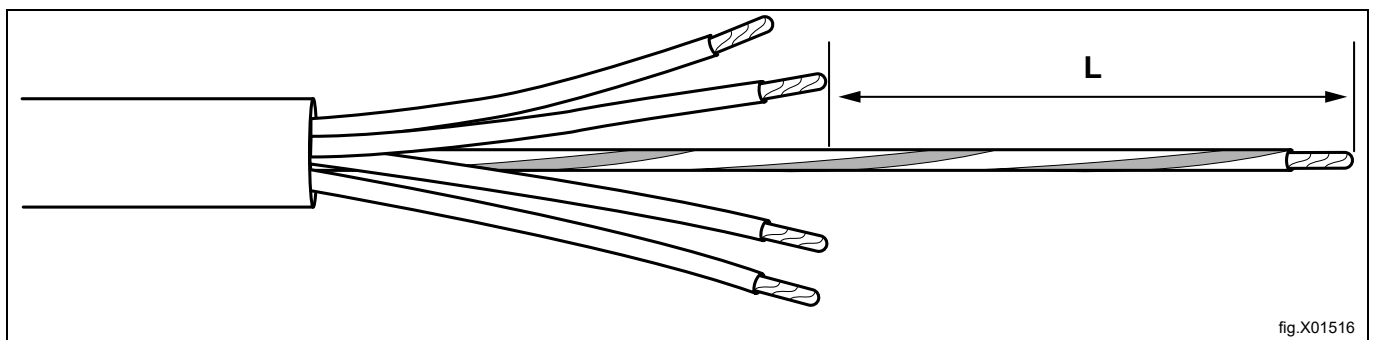


fig.X01516

When the power cord has been prepared according to the table, wrap the protective earth (PE) wire through the ferrite and then connect all wires according to the “Machine connection” section.

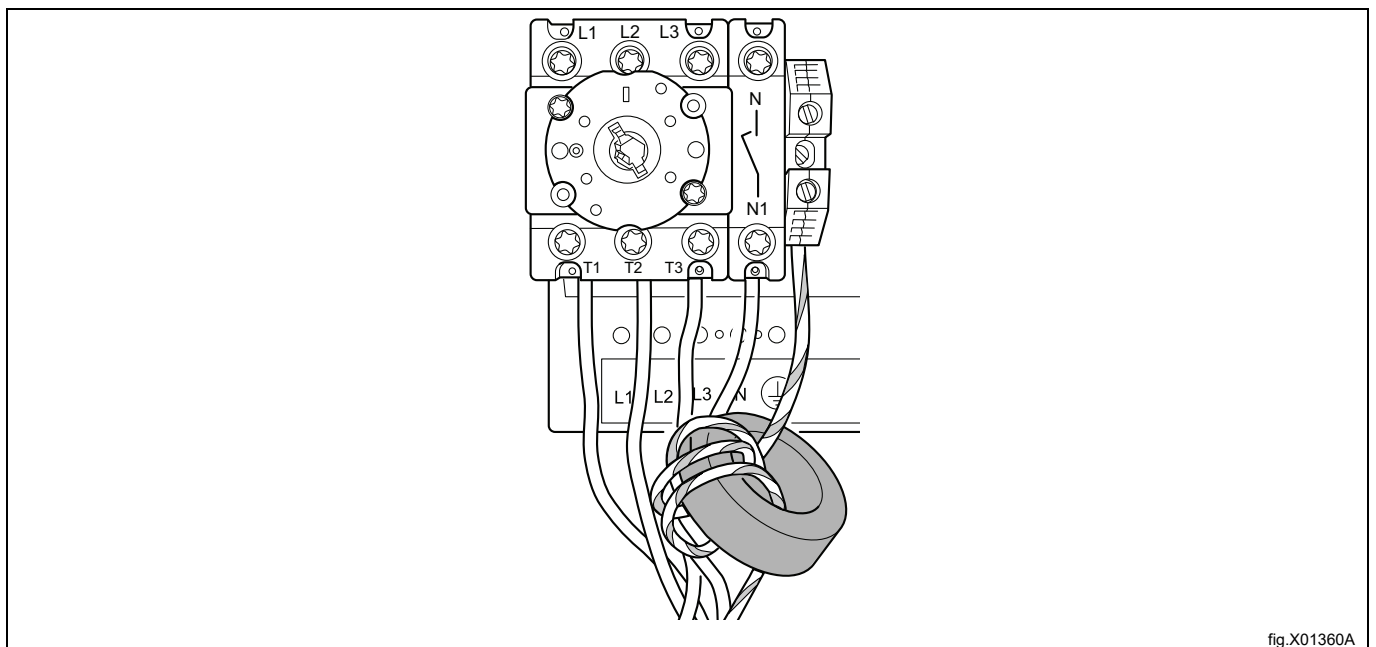
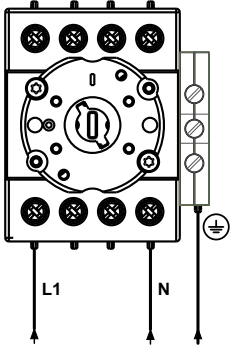
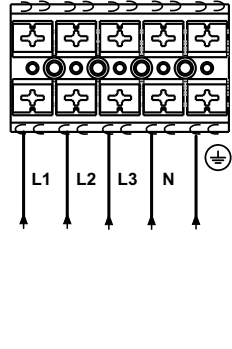
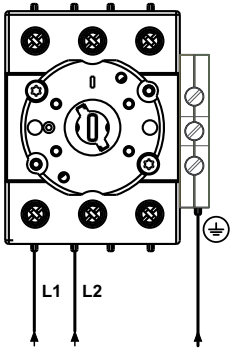
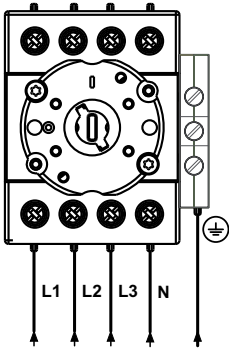
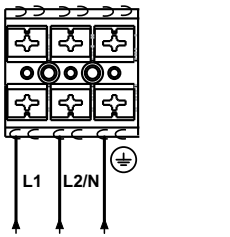
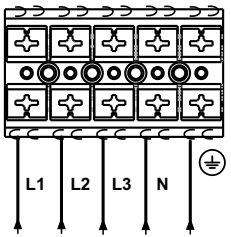


fig.X01360A

9.4 Machine connection

Connect the earth and other wires according to the table.

| Single-phase connection | | Three-phase connection | |
|-------------------------|---|------------------------|---|
| 1NAC |  | 3AC |  |
| 1AC |  | 3N AC |  |
| 1N/1 |  | 3N AC |  |

Single phase machines may be powered either by connection between a phase and neutral or by connecting between two phases.

Example:

Machines for 220-240V single phase may be powered from 380V or 400V or 415V system by connection between a phase and neutral or from 220V or 230V or 240V system by connection between two phases.

9.5 Connector with termination resistor

If no external dosing systems shall be connected to the machine the enclosed connector with termination resistor must be connected at the rear of the machine.

- Connect the connector with termination resistor to connection B.

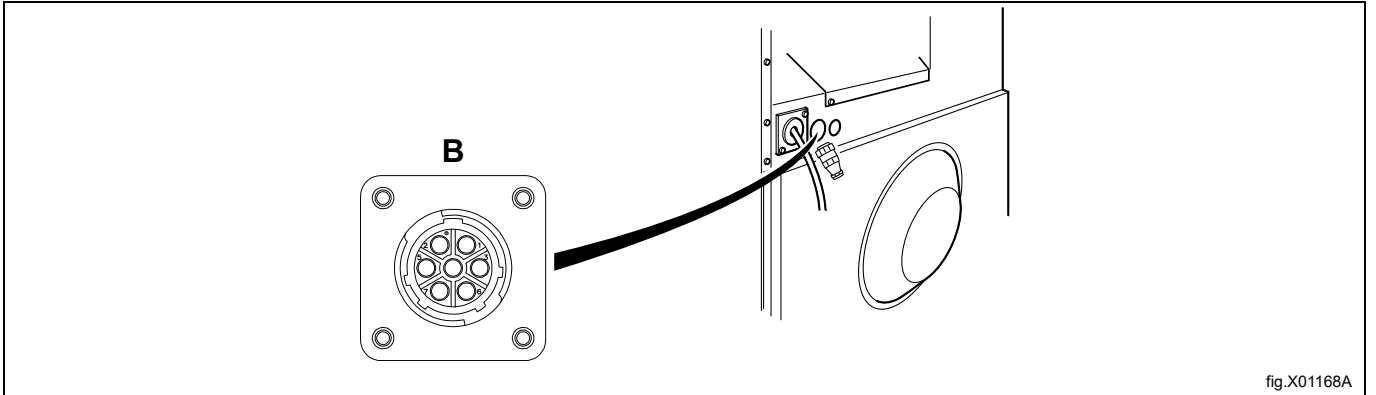


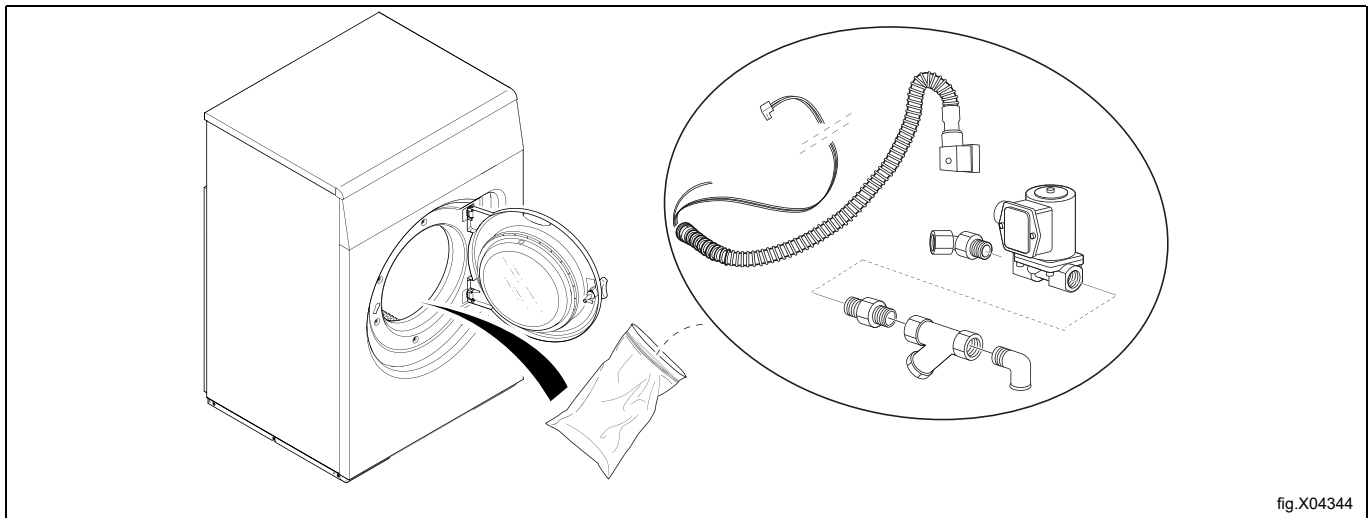
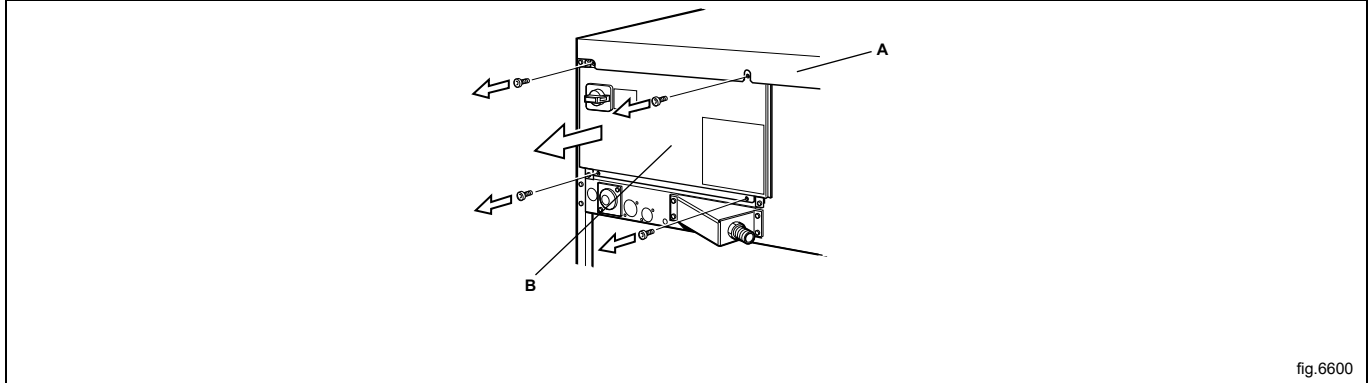
fig.X01168A

10 Steam connection

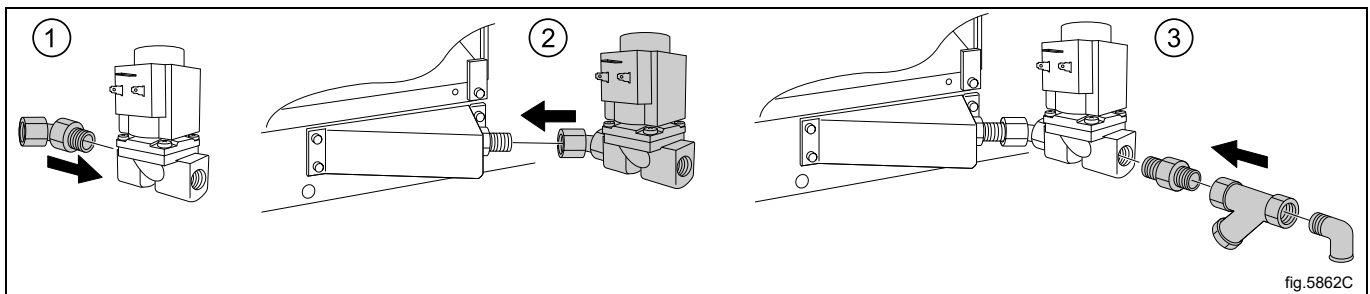
Inlet pipes connected to the machine must be equipped with a manual shut-off valve to facilitate installation and servicing. The connection hose must be of type ISO/1307- 1983 or equivalent.

Connection size at filter: DN 15 (BSP 1/2").

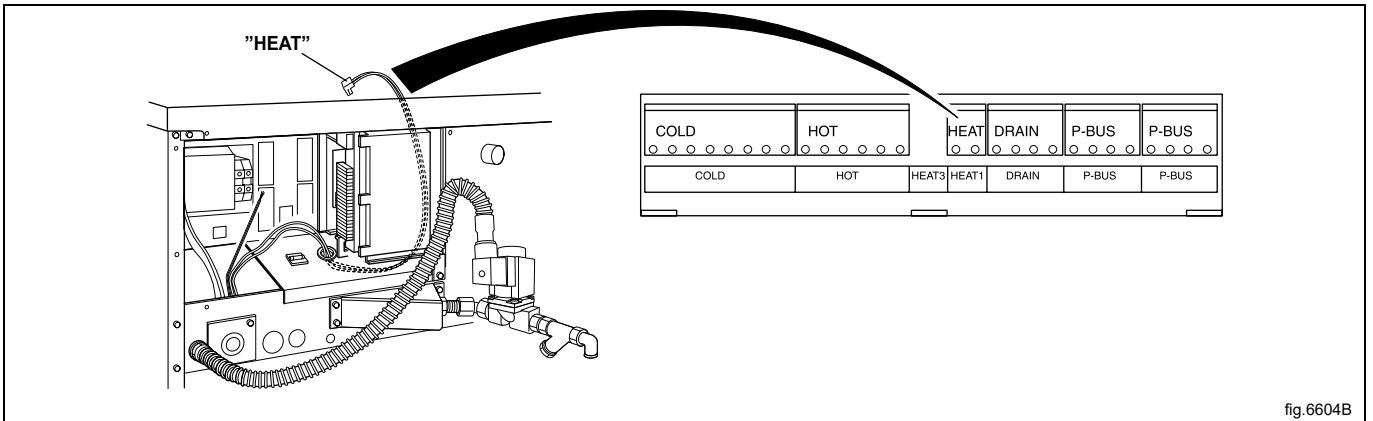
Demount the top panel (A). Demount the casing (B).



Mount the nipple to the steam valve. Mount the steam valve on the machine. Mount nipple, strainer and elbow. Note the direction of the strainer. Mount steam hose to the elbow. Check that there are no sharp angles or bends on the connected steam hose.



Mount the hose with wires between steam valve and machine. Connect the wires to the steam valve. Connect ground cable to the terminal ground connection. Connect the "HEAT" cable connector to the "HEAT" terminal on the I/O board.



Steam pressure required:

- minimum: 50 kPa / 7 psi
- maximum: 800 kPa / 115 psi
- recommended: 600 kPa / 87 psi

Note!

A steam heated machine is only intended to use clean steam.

11 At first power up

When the installation is complete and the power is connected for the first time you will be forced to make some settings. Follow the instructions on the display. When one setting is ready you will automatically enter the next one.

If installation is made in a public area, it is only allowed to select the below segments:

- APARTMENT AUTO DOSING
- APARTMENT MANUAL DOSING
- APARTMENT BUILDING MATS
- LAUNDROMAT/LAUNDERETTE
- LAUNDROMAT/LAUNDERETTE WASCOMAT
- LAUNDROMAT/LAUNDERETTE MENCH
- CAMPING/MARINA
- OTHER SELF SERVICE

12 Function check



May only be carried out by qualified personnel.



A function check must be made when the installation is finished and before the machine can be ready to be used.

Open the manual water valves.

Start a program.

- Check that the drum rotates normally and that there are no unusual noises.
- Check that there are no leaks in water supply/drain connections.
- Check that water passes through the detergent container.
- Check that the door cannot be opened during a program.

Ready to use

If all tests are OK the machine is now ready to be used.

If some of the tests failed, or deficiencies or errors are detected, please contact your local service organisation or dealer.

13 Disposal information

13.1 Appliance recyclability and disposal

13.1.1 Recyclability

Our appliances are manufactured using a significant percentage of recyclable metals (such as stainless steel, iron, aluminium, galvanized sheet, copper, etc.), which can be recovered through the local recycling systems, in compliance with the regulations in force in the country of use.

National regulations regarding waste disposal may vary. Disposal of the appliance must therefore be carried out in accordance with the applicable legislation and the directives issued by the competent authorities in the country where the appliance is decommissioned.

The components of the appliance must be separated and disposed of in accordance with their material composition (e.g. metals, oils, greases, plastics, rubber, refrigerant gases, insulating boards and other insulating material, glass wool, LEDs, etc.) and in full compliance with applicable local and international waste management regulations.

Compressors may contain oils and refrigerants fluids - are special waste and has to be recycled on local bases regulations.

13.1.2 Procedure regarding appliance disposal and component / material recovery

This product should not simply be disposed of in the environment at the end of its life cycle; it is imperative instead either to dispose of it in accordance with local environmental regulations, or, preferably, to deliver it whole to an authorized recycling center.

All removed components, including doors and other structural parts, must be delivered together with the appliance to an authorized recycling or dismantling facility.

The dismantling/recycling center will apply state of the art technologies and methods available to them to effectively disassemble the products for best recyclability.

Note that printed circuit boards, electrical motors or other components identified in European Union legislation to be of high critical raw materials recovery potential need to be addressed specifically.

In case of doubts or questions, always refer to your reference customer care service.

Before disposing of the appliance, carefully inspect its physical condition and preservation state, checking for potential leaks of liquids or gases, as well as for broken parts that may pose hazards during handling and subsequent dismantling.



The symbol on the product indicates that this product should not be treated as domestic waste, but must be correctly disposed of in order to prevent any negative consequences for the environment and human health. For further information on the recycling of this product, contact the local dealer or agent, the customer care service or the local body responsible for waste disposal.




Note!

When dismantling the appliance, any marking, this manual and other documents concerning the appliance must be destroyed.

13.2 Disposal of packing

The packing must be disposed of in compliance with the current regulations in the country where the appliance is used. All the packing materials are environmentally friendly.

They can be safely kept, recycled or burned in an appropriate waste incineration plant. Recyclable plastic parts are marked as following examples.

| | |
|---|--|
|  | Polyethylene: <ul style="list-style-type: none"> • Outer wrapping • Instructions bag |
|  | Polypropylene: <ul style="list-style-type: none"> • Straps |
|  | Polystyrene foam: <ul style="list-style-type: none"> • Corner protectors |



www.electroluxprofessional.com